

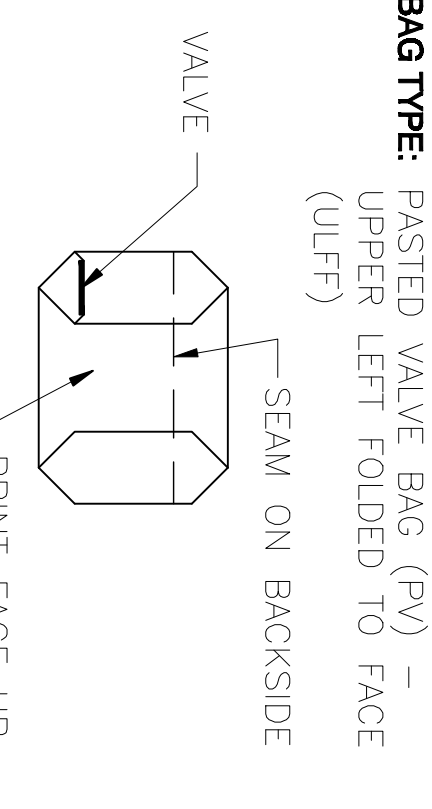
MAIN SYSTEM ELECTRICAL ENCLOSURE (SIZE AND LOCATION TO BE DETERMINED)

- NOTES:**
1. GRAPHIC PACKAGING IS DESIGNATED AS 'GP'.
 2. GP RECOMMENDS THAT THE CONVEYORS NOT BE LAGGED TO THE FLOOR UNTIL A GP SERVICE REP. HAS VERIFIED THE POSITION. ADDITIONALLY, IT MAY BE WISE TO PLAN FOR A FEW INCHES OF FLEXIBILITY IN POSITION BY USING A LENGTH OF FLEXIBLE CONDUIT FOR FIELD WIRING.
 3. ALL CONVEYORS HAVE APPROXIMATELY A 1" GAP BETWEEN FRAMES.
 4. CUSTOMER OR GP TO PROVIDE AND INSTALL PROTECTIVE GUARDING FOR PURPOSES OF PERSONNEL SAFETY AT TIME OF EQUIPMENT INSTALLATION. SPECIAL CONSIDERATION SHOULD BE GIVEN TO AREAS OF THE DRAWING MARKED AS: ~~~~~
 5. 1 1/2" GAP FOR VIBRATION ISOLATION (FLEXIBLE CONNECTION BY GP).

TECHNICAL SPECIFICATIONS

AREA CLASSIFICATION:	NON RATED
AIR:	80 PSI CLEAN DRY AIR RECOMMENDED
ELECTRICAL - POWER:	DETERMINED BY CUSTOMER (230/460 VAC TYPICAL)
ELECTRICAL - CONTROL:	120 VAC 1 PHASE 60 HZ
MOTORS:	TEFC IS STANDARD*
ENCLOSURES:	NEMA 12 IS STANDARD*
PAINT:	STEEL IT RECOMMENDED
DUST COLLECTION:	RECOMMENDED (400 SCFM)
PRODUCT:	MILD STEEL (STAINLESS STEEL OPTIONAL)
* UPGRADES AVAILABLE	

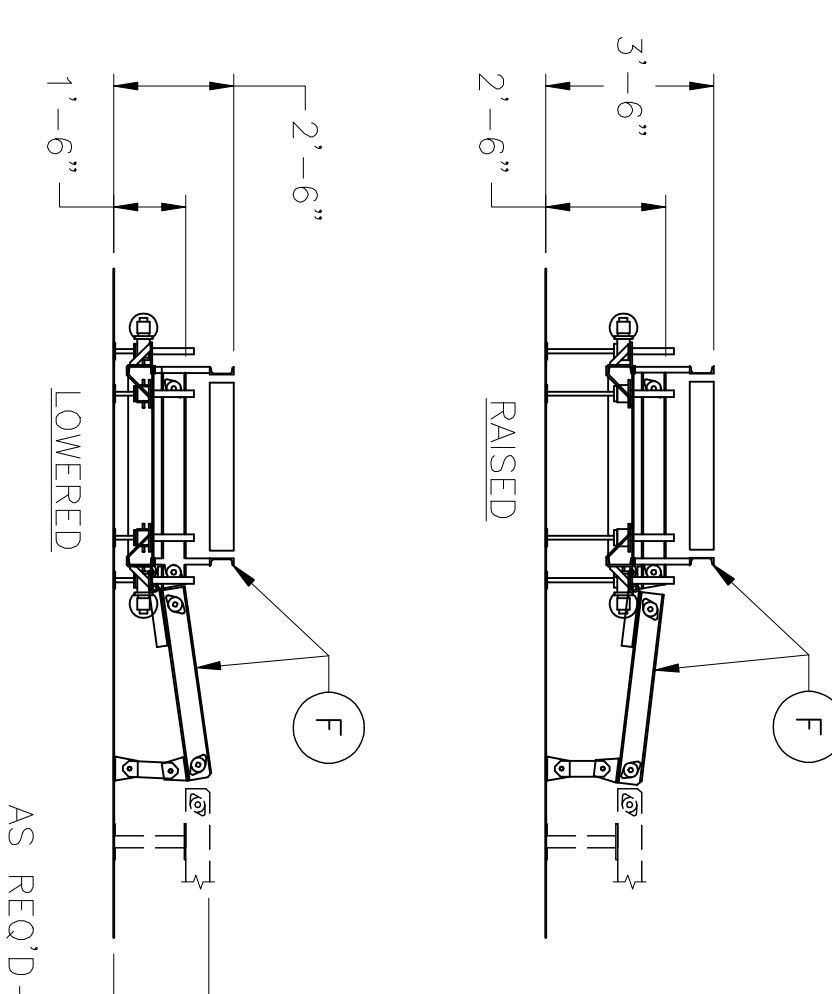
BAG REQUIREMENTS



BAG SIZE(S):
 NO BE DETERMINED - SYSTEM DESIGNED FOR A MAXIMUM EMPTY BAG LENGTH OF 33" AND AN EMPTY MINIMUM BAG LENGTH OF 21".

BAG TRAVEL:
 FACE UP, VALVE TRAILING AFTER TIP-OVER

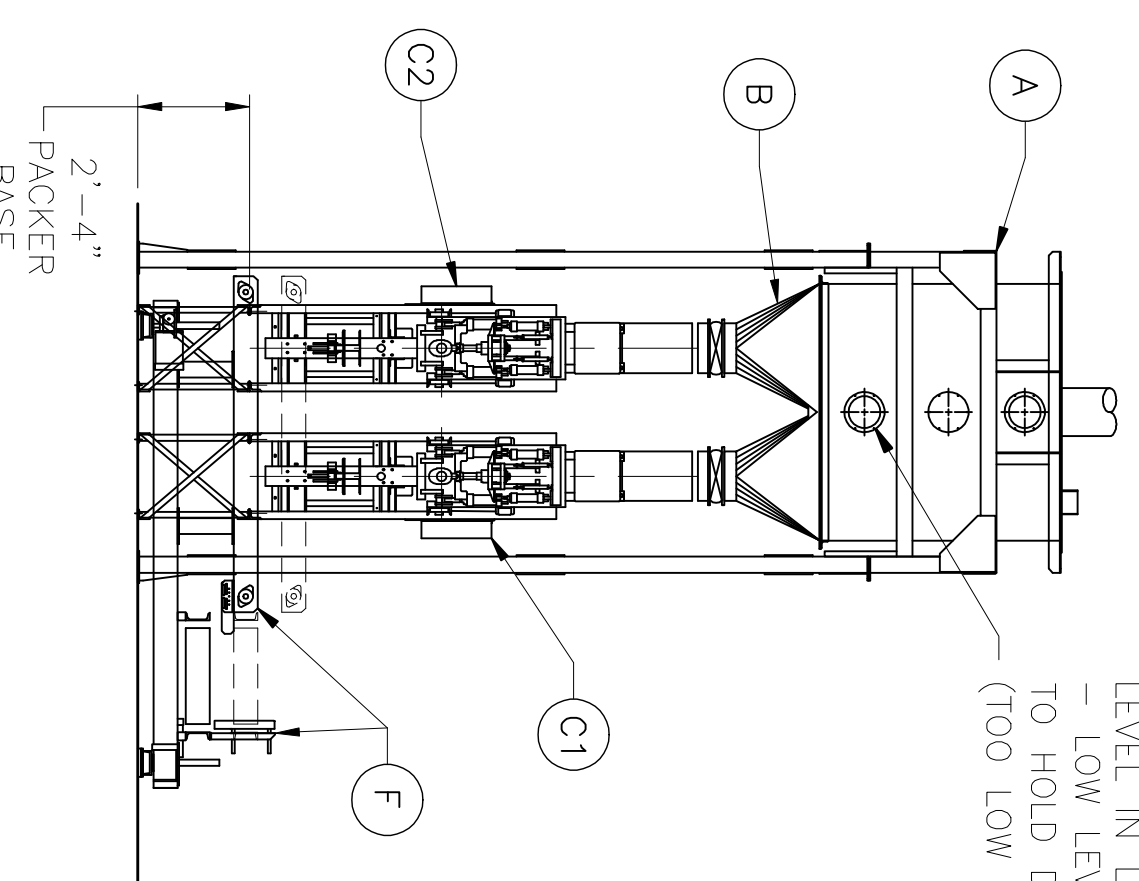
ELEVATION C-C



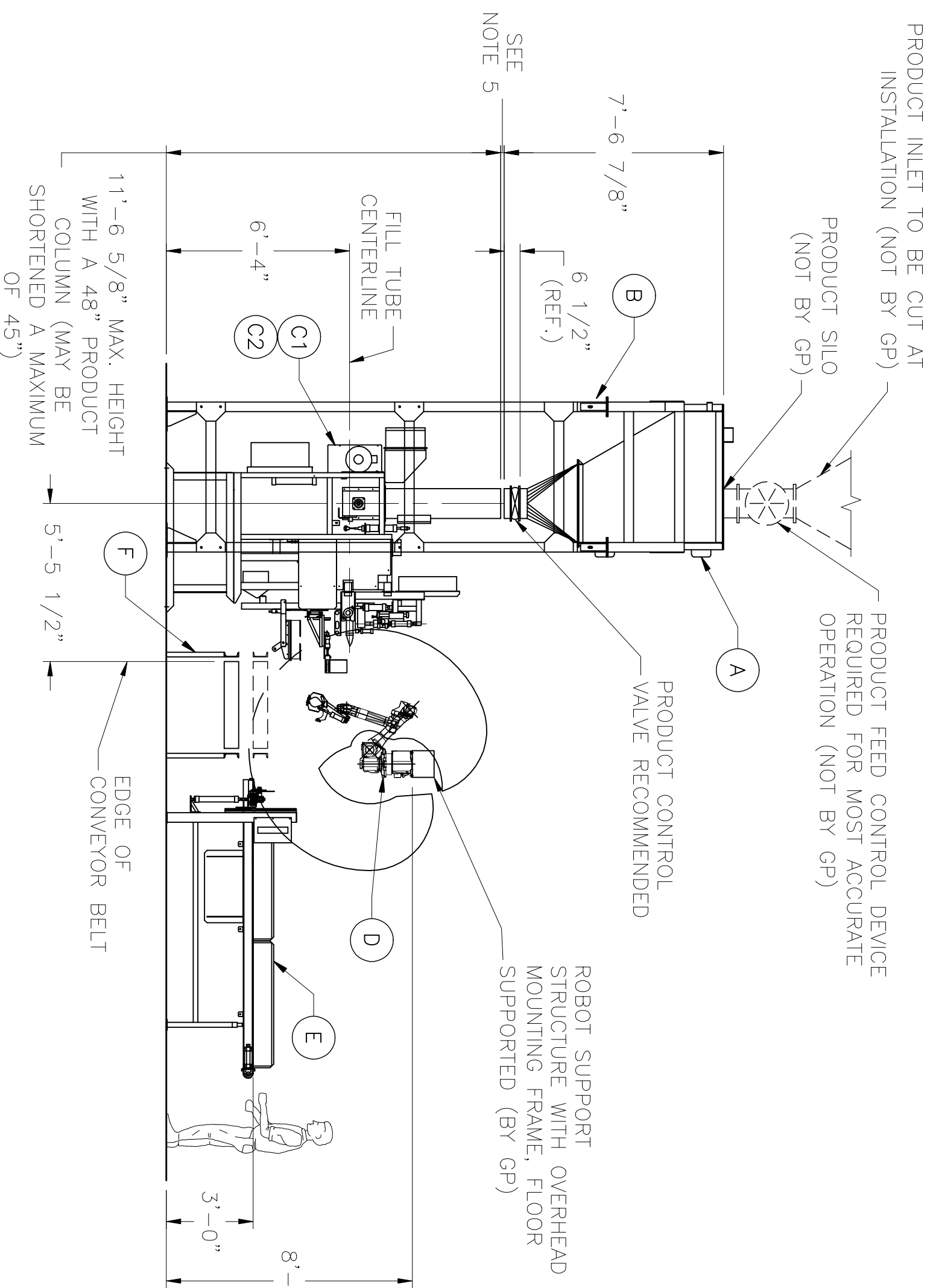
BIN LEVEL INDICATORS (2)
 - HIGH LEVEL SWITCH, USED BY CUSTOMER TO CONTROL PRODUCT LEVEL IN LEVEL CONTROL BIN
 - LOW LEVEL SWITCH, USED BY GP TO HOLD DISCHARGE OF BAG ON PACKER(S) (TOO LOW TO PACK)

ELEVATION A-A

(ROBOT AND EMPTY BAG TABLE NOT SHOWN FOR CLARITY)



ELEVATION B-B



ITEM	MODEL	REF DWG	SERIAL #	DESCRIPTION
A	2132L	DS523-B		HEAVY DUTY LEVEL CONTROL BIN WITH LEVEL INDICATORS w/ SUPPORT LEGS
B	2132X	DS427-0		TRANSITION HOPPER - 2 TUBE ON 32" CENTERS
C1	CLEAN-PAK 820-MP	DS557-0		JET FLOW VALVE BAG PACKER w/ ULTRASONIC VALVE BAG SEALER
C2	CLEAN-PAK 820-MP	DS557-0		JET FLOW VALVE BAG PACKER w/ ULTRASONIC VALVE BAG SEALER
D	M-10/A	~		FANUC ROBOT w/ GP CLAW TOOL
E	890	DS475-E		EMPTY BAG TABLE, 10'-0" LONG
	850	DS475-B		PACKER CONVEYOR, 42" WIDE WIRE MESH x 7'-0" O.A.L. w/ TIP BAR
	850	DS475-B		TRANSFER CONVEYOR, 24" WIDE x 4'-6" O.A.L. w/ TIP FENCE
F				TRANSFER CONVEYOR, 24" WIDE x 4'-0" O.A.L. LIFT FRAME

FOR PRELIMINARY INFORMATION PURPOSES ONLY. DO NOT USE FOR INSTALLING EQUIPMENT.

TYPICAL LAYOUT DRAWING
 820-MP (2), M-10/A ROBOT
 BAG APPLICATOR, 890 AND 850
 CONVEYORS, AND LIFT FRAME

GRAPHIC PACKAGING INTERNATIONAL

Bag Packaging Equipment
 1881 West North Temple
 Salt Lake City, UT 84116-3097

DRAWN: MRM DATE: 3/10/09
 DESIGNED: ~
 CHECKED: ~
 PRINTING SCALE: 1/4" = 1'-0"

SHEET NO. 1 OF 1
 DWG. NO. 314249-D

DATE	INITIALS	ECO NO.	APP'D
REVISIONS			

15 14 13 12 11 10 9 8 7 6 5 4 3 2 1