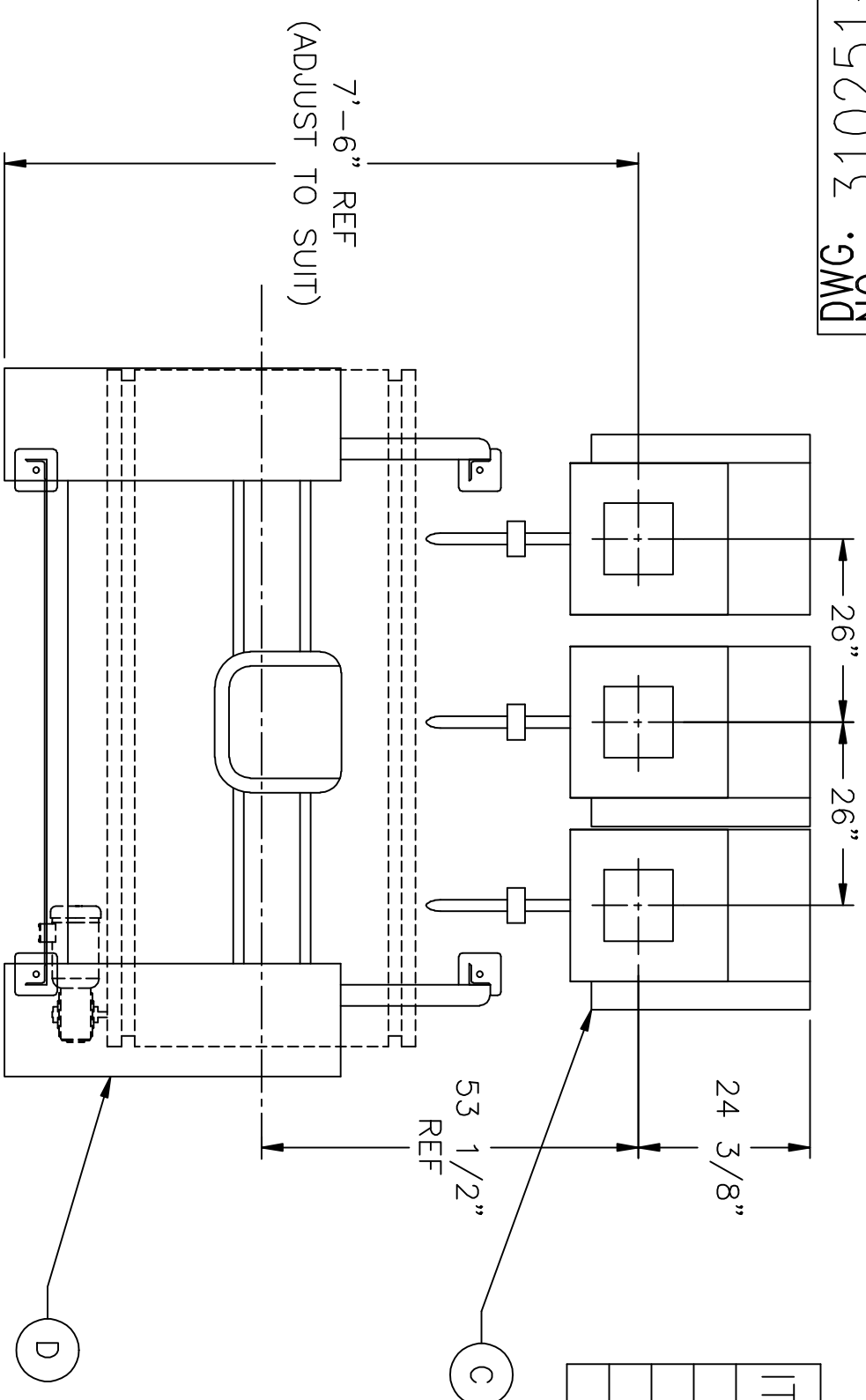
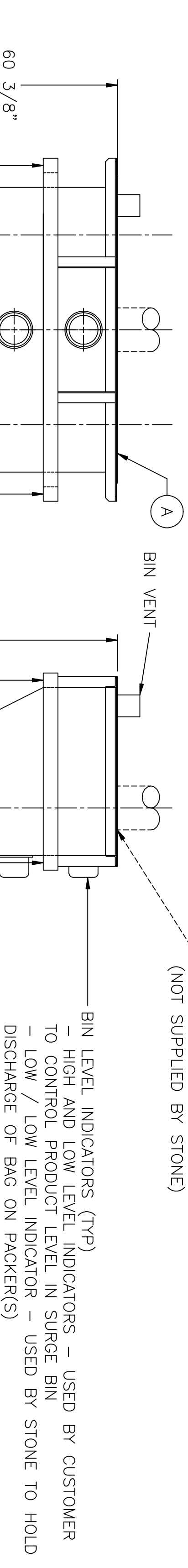


ITEM	MODEL	REF DWG	DESCRIPTION	QTY
A			HEAVY-DUTY SURGE BIN WITH LEVEL INDICATORS	1
B			TRANSITION HOPPER - 3 TUBE ON 26" CENTERS W/ MANUAL CUT-OFF GATES	1
C	801	DS488	JET FLOW VALVE BAG PACKER W/ 31" TALL COLUMN	3
D	A-10085	DS93-M	SLIDING OPERATORS SEAT AND STAND	1

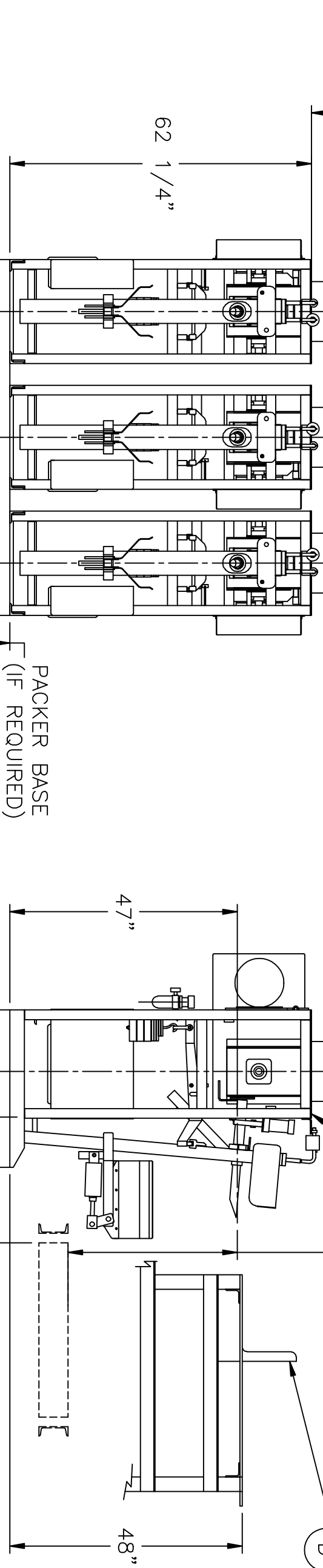
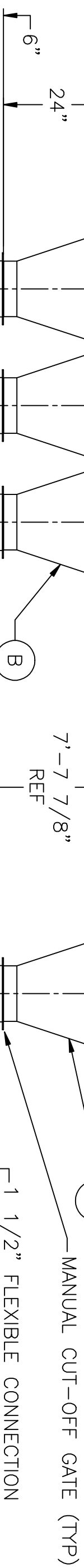


- NOTES:**
- SUPPORT SURGE BIN AND TRANSITION HOPPER INDEPENDENT OF PACKERS. (NOT BY STONE)

TECHNICAL SPECIFICATIONS:
 ELECTRICAL: POWER: 230/460 VAC, 3 PHASE, 60 HZ
 CONTROL: 120 VAC, 1 PHASE, 60 HZ
 TEFC MOTORS
 NEMA 12 ENCLOSURES



PRODUCT INLET
 TO BE CUT AT INSTALLATION
 (NOT SUPPLIED BY STONE)



PACKER BASE
 (IF REQUIRED)

TYPICAL INSTALLATION
 3-TUBE 801

Stone Container Corporation
 Bag Packaging Equipment
 1881 West North Temple
 Salt Lake City, UT 84116-3387
 (801) 595-6800

DRAWN: Ryan A. Yundt
 DATE: 14NOV97
 SHEET: 1 OF 1
 SCALE: 1/2" = 1'-0"
 DWG. NO. 310251-C

LT#	DATE	INITIALS	EQD NO.
REVISIONS			

11 10 9 8 7 6 5 4 3 2 1