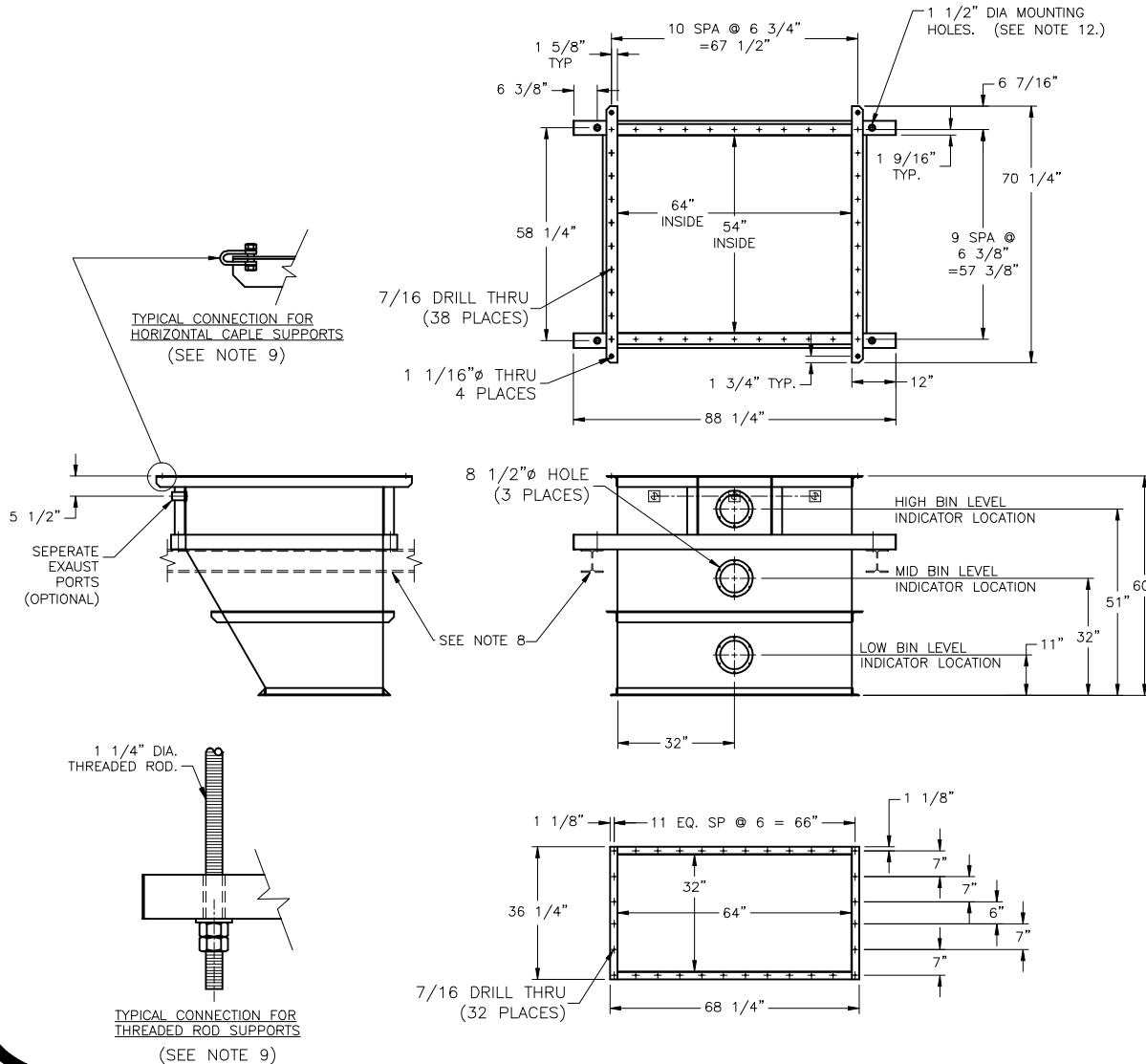


HEAVY DUTY – LEVEL CONTROL BIN 2 TUBE ON 32" OR 3 TUBE ON 22"



Data Sheet 517-0

BY PREMIER TECH SYSTEMS



NOTES

- BIN DESIGNED FOR PRODUCT LOAD NOT TO EXCEED 11,000 LB.
- ESTIMATED LIQUID LEVEL CAPACITY OF BIN AS DRAWN IS 103 cu.ft. MAXIMUM PRODUCT DENSITY IN BIN NOT TO EXCEED 106 lbs./cu.ft.
- BIN COVER (1/8" THICK) IS NOT SHOWN. BIN COVER INCLUDES A VENT TO DUST COLLECTION SYSTEM OR OVERHEAD BIN OR SILOS. PRODUCT INLET IS TYPICALLY CUT DURING INSTALLATION (BY OTHERS). A 1/8" NEOPRENE GASKET IS PROVIDED BETWEEN BIN AND COVER.
- TYPICAL LEVEL INDICATOR MOUNTING POSITIONS SHOWN. MOUNTING DETAILS VARY WITH MODEL & MANUFACTURER.
- HIGH & MID LEVEL INDICATORS ARE FOR CUSTOMER USE TO CONTROL PRODUCT HEAD. A CONSISTENT HEAD OF PRODUCT ABOVE THE PACKERS IS ESSENTIAL FOR WEIGHT ACCURACY.
- THE LOW LEVEL INDICATOR IS TYPICALLY TIED IN TO THE PACKERS TO HALT BAGGING DURING A LOW BIN CONDITION.
- DO NOT SUPPORT BIN FROM PACKERS. A TRANSITION HOPPER AND FLEXIBLE CONNECTORS MATE TO THE PACKERS' INLETS. THE FLEXIBLE CONNECTION HELPS PREVENT VIBRATION TRANSMISSION TO THE PACKER'S SCALE.
- THE SURGE BIN IS TYPICALLY SUPPORTED IN THIS AREA BY STRUCTURAL STEEL ATTACHED TO RIGID BUILDING OR SILO SUPPORTS. THIS IS THE PREFERRED METHOD. (A LESSER ALTERNATIVE IS DESCRIBED IN NOTE 9.) REMOVE BIN LEVEL SWITCHES PRIOR TO ANY WELDING OF SURGE BIN.
- AN ALTERNATE METHOD OF SUPPORTING THE SURGE BIN IS FROM OVERHEAD STRUCTURE WITH 1-1/4" DIA. THREADED RODS (4) [OF B 7 GRADE] THROUGH THE 4" SQ. TUBING AS SHOWN ADJACENT. RODS ARE INTENDED FOR TENSION LOADING. MOUNTING TO OVERHEAD STRUCTURE SHOULD NOT INCLUDE A MECHANICAL BIND THAT COULD PROVIDE A SIDE LOADING OF THE RODS.
WARNING DO NOT INSTALL BIN SUPPORT RODS WITH JAM NUTS ON THE UPPER SIDE OF THE BIN SUPPORT TUBES! DOING SO MAY INTRODUCE A MOMENT INTO THE RODS THAT MAY RESULT IN ABRUPT CATASTROPHIC SUPPORT ROD FAILURE. SUPPLY SUPPLEMENTAL HORIZONTAL CABLE SUPPORTS ARE RECOMMENDED FROM THE SURGE BIN TO THE BUILDING STRUCTURAL MEMBERS TO HELP STABILIZE SURGE BIN, BUT HARDWARE IS NOT SUPPLIED BY STONE.
- DO NOT USE DIRECT CONNECTION TO BIN COVER VENT WHEN USING DIAPHRAM-TYPE LEVEL INDICATORS. LEVEL INDICATORS CAN FALSE-TRIP WITH INDUCED VACUUM. A DIVORCED, HOODED CONNECTION IS RECOMMENDED AS AN ALTERNATIVE.
- SURGE BINS ARE NOT DESIGNED TO HOLD A PRESSURE. THE COVER HAS A VENT INTENDED TO ELIMINATE ANY PRESSURE DIFFERENTIAL ACROSS BIN WALL. INTRODUCING ENOUGH PRESSURE ON THE SURGE BIN WILL CAUSE IT TO FAIL. PRESSURE MAY ALSO CAUSE PRODUCT FLOW PROBLEMS.
- THE SURGE BIN CAN BE SECURED TO THE SUPPORT STRUCTURE, EITHER BY BOLTS THROUGH THE MOUNTING HOLES, OR BY WELDING THE BIN TO THE FRAME.

ESTIMATED SHIPPING WEIGHT 1000 LBS.
ESTIMATED CRATE DIMENSIONS 100" L X 85" X 70" T