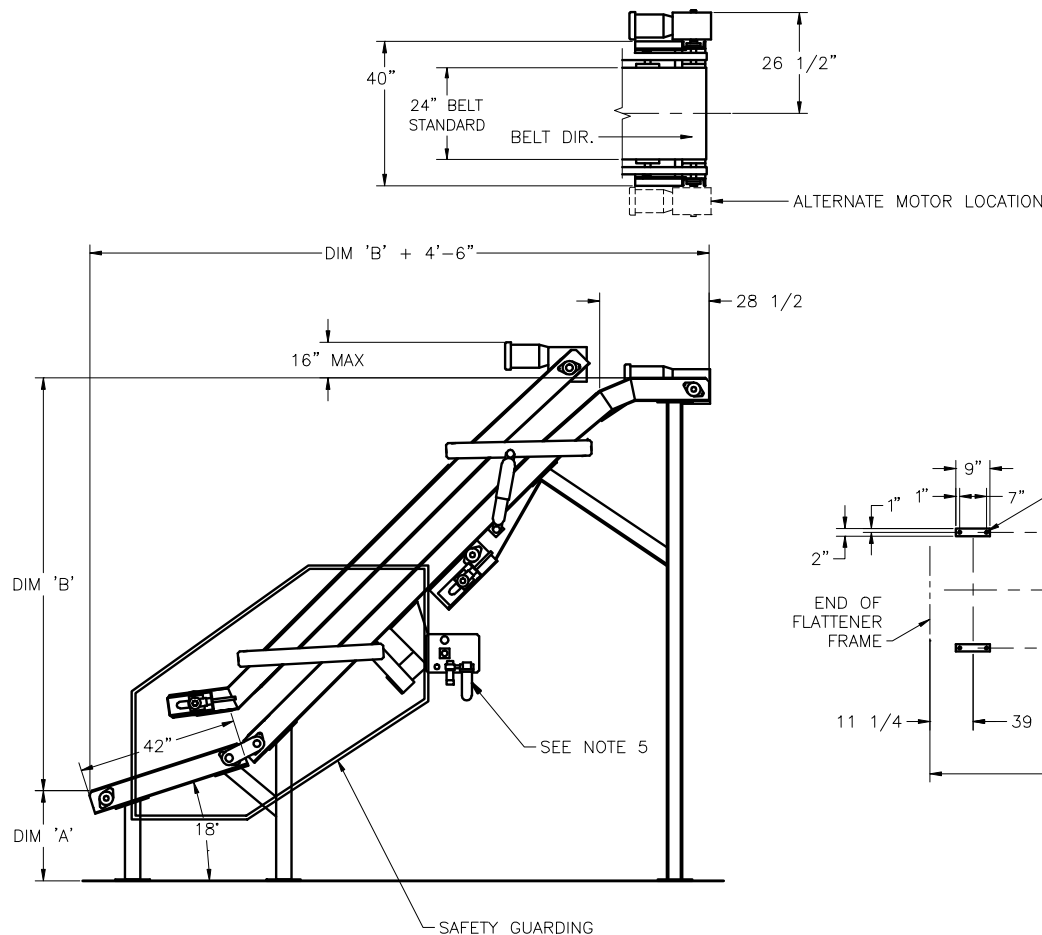




BY PREMIER TECH SYSTEMS

MODEL 852 ELEVATING BAG FLATTENER

Data Sheet 482-A

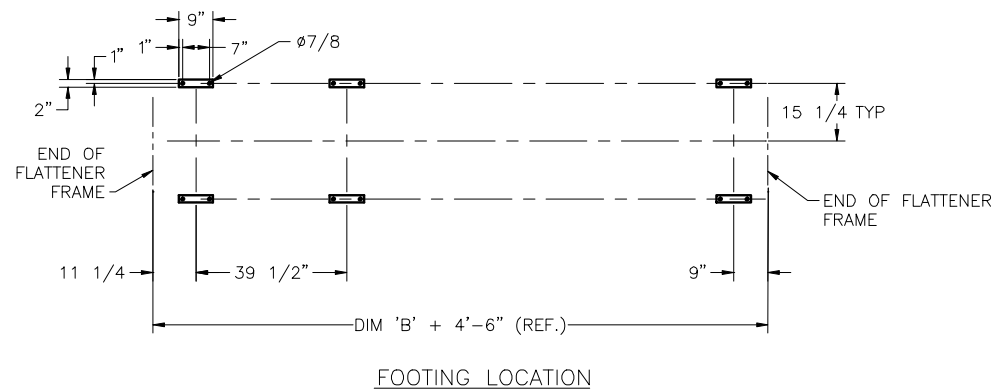


NOTES:

1. DIMENSION 'A' 12" MIN., 36" MAX. (FOR HIGHER DIMENSION CONTACT FACTORY).
2. DIMENSION 'B' AVAILABLE IN 1'-0" INCREMENTS: 7'-0", 8'-0", 9'-0", 10'-0", 11'-0", AND 12'-0".
3. BELT IS INTERWOVEN POLYESTER WITH "RUFF-TOP" PVC COVER. BELT IS POSITIVELY TRACKED ON V-GROOVE ROLLERS.
4. 230/460 VAC, 3PH, 60HZ POWER REQUIRED. 1 1/2 & 1 HP MOTORS.
5. CLEAN DRY AIR AT 80 PSI REQUIRED. CONSUMPTION IS NEGLIGIBLE (1 SCFM OR LESS).
6. AVAILABLE BELT SPEEDS INCLUDE: 27, 36, 57, 73, 100, 117 FPM.
7. SAFETY GUARDING IS PROVIDED.
8. SAFETY PULL SWITCH & CORDS (NOT SHOWN) ARE AVAILABLE AS AN OPTION.
9. OVERHEIGHT SENSOR/PHOTO EYE AT INLET (NOT SHOWN) IS STANDARD.

OPTIONS:

- MILL & CHEMICAL DUTY MOTORS
- DUST IGNITION PROOF MOTORS
- SAFETY PULL CORDS



ESTIMATED CRATED DIMENSIONS: 170"L x 50"W x 160"H
ESTIMATED SHIPPING WEIGHT: 1800lb.