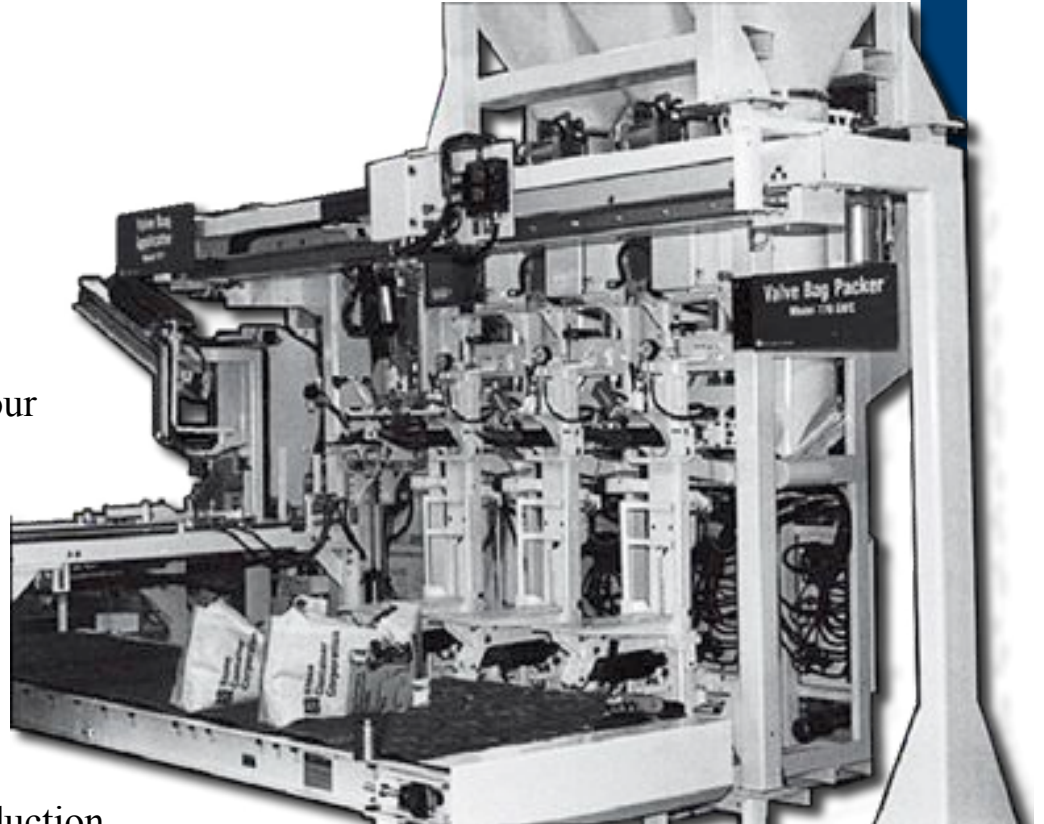


511

VALVE BAG APPLICATOR
Automatic Multi-Tube Placer



Dynamic: Automatically places valve bags on up to four valve bag packers.

High Speed: Servomotor drive with positioning encoder allows for rates of up to 17 bags per minute.

Continuous Operation: An ejector system removes the bag if not suitable for application. Production continues without operator attention.

Efficient: Bag magazine can be loaded without interrupting production.

Reliable: Positive mechanical valve opening duckbill and bag gripping claw ensure proper bag placement.

Easily Adjustable: Requires minimal changeover to handle a wide range of bag sizes.

Versatile: Will work with paper, poly, or woven polypropylene block bottom style valve bags.

Robust: Rugged design assures maximum up-time.

Flexible Design: Multiple configurations available for adaptation into tight places.

Features

Basic valve bag applicator includes:

- 10 ft long empty bag storage table
- Bag pick-up table
- Valve opening duckbill
- Bag gripping claw
- Horizontal trolley
- Touchscreen operator control station with diagnostics
- NEMA 12 dust tight electrical enclosures
- Totally enclosed motors
- Interface to GPI electronic packers
- Air filter/regulator with lockable shutoff valve

Technical Specifications

Electrical Requirements:

230/460 V, 3 phase, 60 Hz, 30/15 amps

Air Requirements:

1 scf clean dry air at 80 psig per cycle

Shipping Weight:

4800 lb (approximately)

Bag Types:

Multiwall paper PV style valve bags

Plastic film valve bags - block bottom style

Woven polypropylene valve bags - block bottom style

Valve Location:

Upper left folded to face for left hand applicator

Upper right folded to face for right hand applicator

Bag Size Range:

12" to 25" face width

14" to 36" face length

3 1/2" to 8" top width (up to 8" valve)

Bag Storage Capacity:

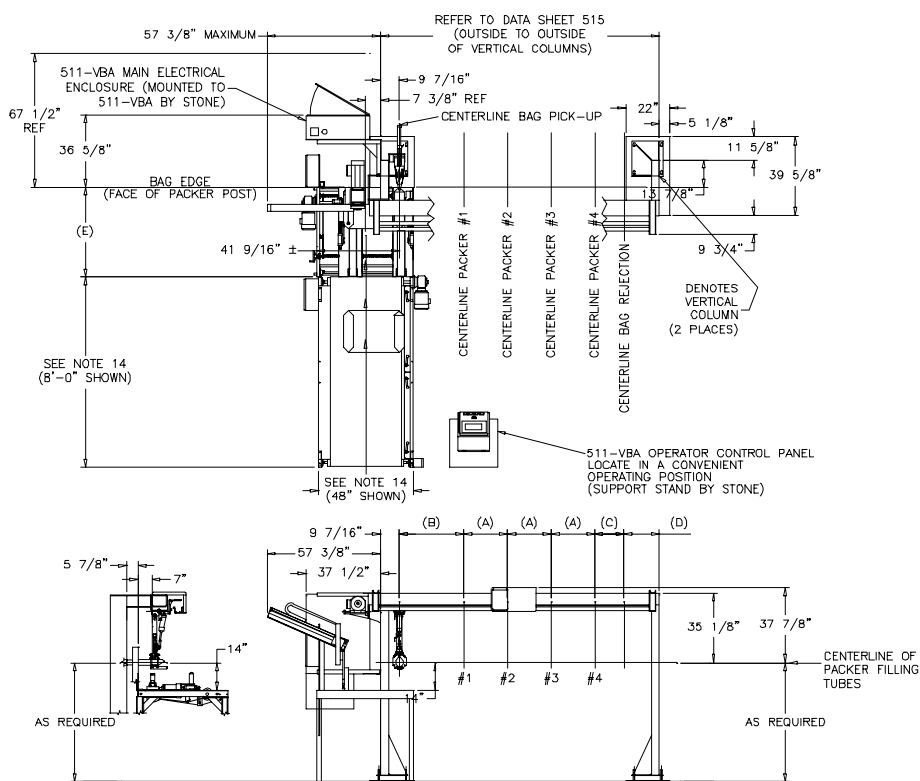
Up to 50 bags per stack - number of stacks depends upon length of bag storage section and bag width.

Filling Tube Spacing:

Any spacing up to 17" between end tubes.

Filling Tube Angle:

Can be assembled for horizontal or 5° tilt filling tubes.



**Premier Tech
Systems**

1881 West North Temple
Salt Lake City, UT
84116 U.S.A.

☎ 801 595-6800

☎ 801 363-7830

@ stonepak@premiertech.com

WWW.STONEPAK.COM