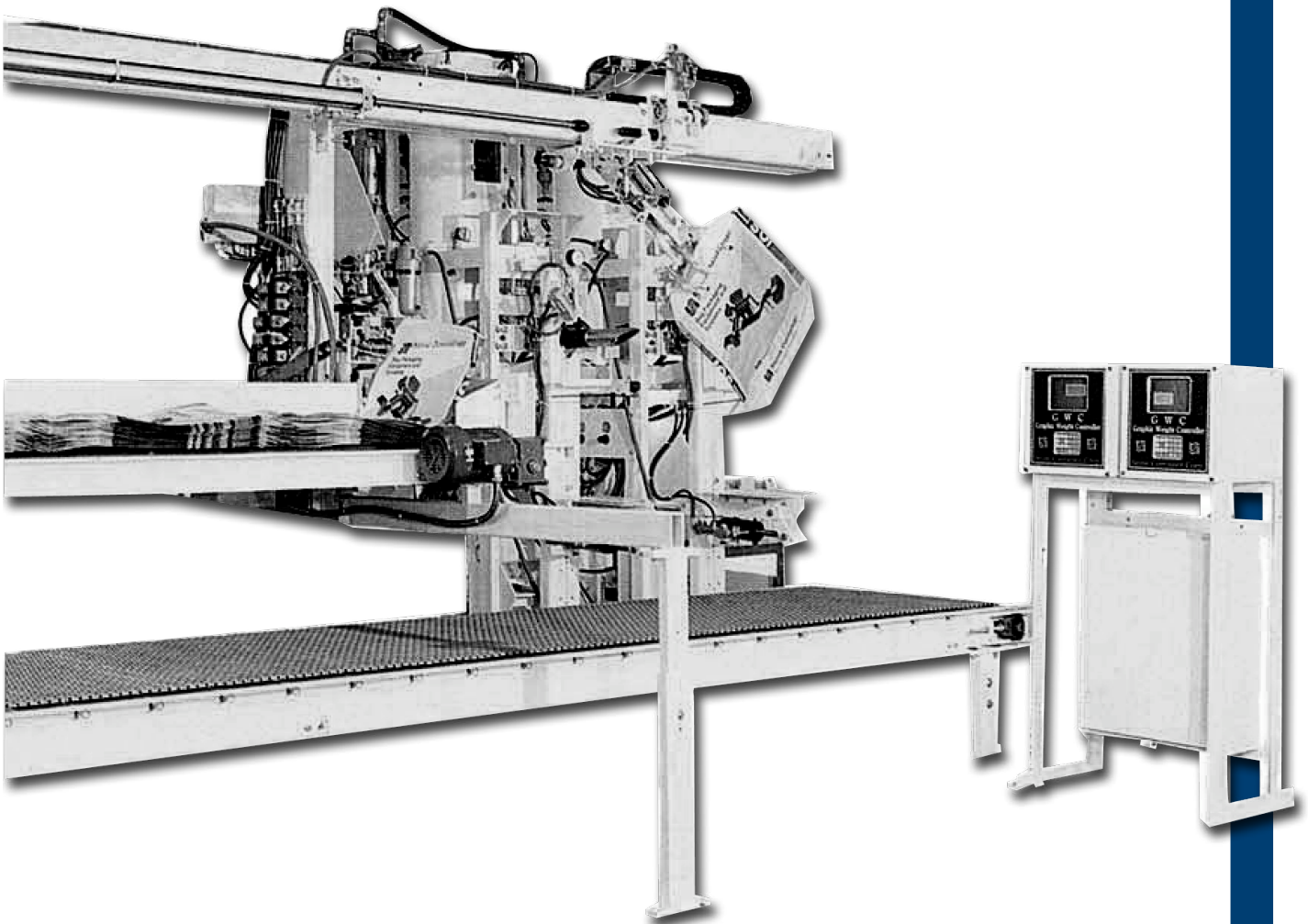


## 506 VBA & 507 VBA FULLY AUTOMATIC VALVE BAG PLACEMENT

Automatically positions valve bags on the filling tubes of a one (506) or two-tube (507) valve bag packers. The addition of a STONEPAK Ultrasonic Sealer completes an automated bag filling and sealing operation.



**The Models 506 & 507 Valve Bag Applicators** are easily adjustable for a range of bag widths and lengths. The machines offer minimal changeover time on multiple bag size operations. They can apply up to ten bags per minute depending upon filling time.

**Features:**

- Discards defective bags and continues operation without operator assistance
- Can reload bag magazine without interrupting production
- Allen Bradley programmable logic controller
- Non-contact solid state encapsulated proximity switches - no wear - no adjustments
- Choice of left or right hand models. Multiple configurations permit adaptation to tight spaces
- Adjustable air compression for transport belt guides

**Technical Specifications:**

**Bag Types:**

- Multiwall paper valve bags, PV style with or without internal sleeve
- Plastic film valve bags, block bottom style
- Woven polypropylene valve bags, block bottom style

**Valve Location:**

- Upper left folded-to-face for left hand applicator
- Upper right folded-to-face for right hand applicator

**Bag Size Range:**

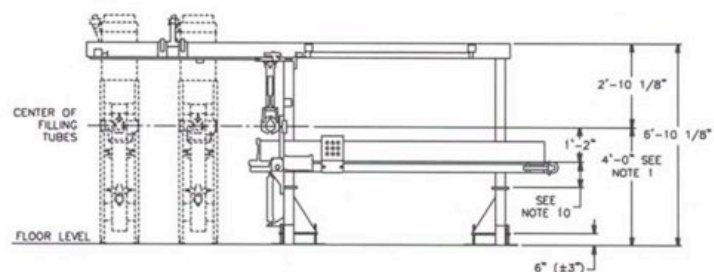
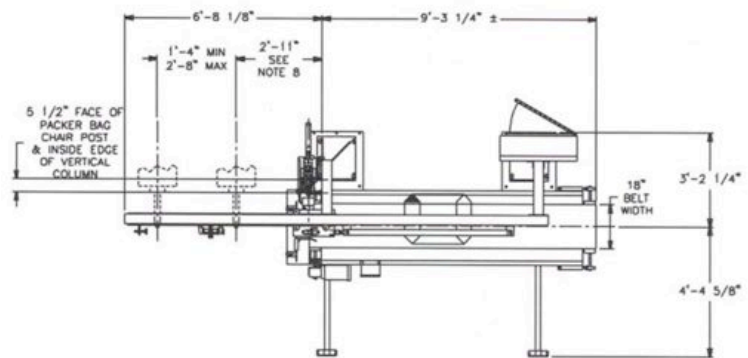
- 16" - 25" face width
- 18" - 36" face length
- 3" - 8" top width (up to 8" valve)

**Filling Tube Angle:** Can be assembled for horizontal or 5 degree tilt filling tubes

**Air Requirements:** 2 cu ft clean dry free air at 80 psig per bag

**Electrical Requirements:** 230/460 V, 3 ph 60 Hz, 10/5 amps

**Shipping Weight:** Approximately 3500 lbs



1881 West North Temple  
Salt Lake City, UT  
84116 U.S.A.

☎ 801 595-6800  
☎ 801 363-7830  
@ stonepak@premiertech.com  
**WWW.STONEPAK.COM**