

110-AP

AUTOMATIC BAG PALLETIZER



Productive: Stacks up to 25 bpm for a 5-bag pattern and up to 30 bpm for 6 and 8-bag patterns.

Heavy-Duty: Includes a rugged tubular steel frame and a four-point lift system (no hydraulics - no cantilevered lift).

Versatile: 44 standard patterns included with each palletizer. Additional patterns are available.

Fully Automatic: Provides quality stacks that cannot be achieved with hand stacking or by a robot.

User Friendly: Optional touch-screen provides diagnostics and maintenance aids.

Flexible: Multiple configurations available to fit your space requirements.

Square Stacks: The split load plates work in conjunction with forming plates to ensure that each layer is placed squarely on the pallet.

Features

- Bag turning device to orient bags
- Row forming area
- Row pusher to transfer rows to load plates
- Contaminant tolerant wheels and tracks for horizontal linear motion
- Layer squaring plates
- Split load plates - two steel plates withdraw to deposit complete layers on pallet
- Wire mesh belt pallet conveyor on pallet elevator
- Roller chain elevator lift - evenly lifts all four corners
- Empty pallet dispenser - fork tine type - with a wire mesh belt empty pallet infeed conveyor
- Empty Pallet alarm on pallet dispenser
- Data terminal access module (DTAM) for adjustment of operating parameters
- Mechanical and electrical safety lock on pallet elevator
- Tool-less adjustments for pattern size changes
- Push-button control station mounted on the optional observation platform

Technical Specifications

Electrical Requirements:

- 230/460 V, 3 ph, 60 Hz, 60/30 amps

Air Requirements:

- Clean dry air at 80 psig.
- Palletizer & Pallet dispenser: 1 scf per bag
- Slip-sheet dispenser: 40 scf per pallet (typically 50 scfm for 25 bags/min & 40 bags/pallet)

Shipping Weight:

- 17,000 lb (approximate)

Bag Types:

- Multi-wall paper or plastic

Pallet & Layer Size:

- 54" x 48" maximum

Maximum unit pallet load weight:

- 4000 lb

Infeed height:

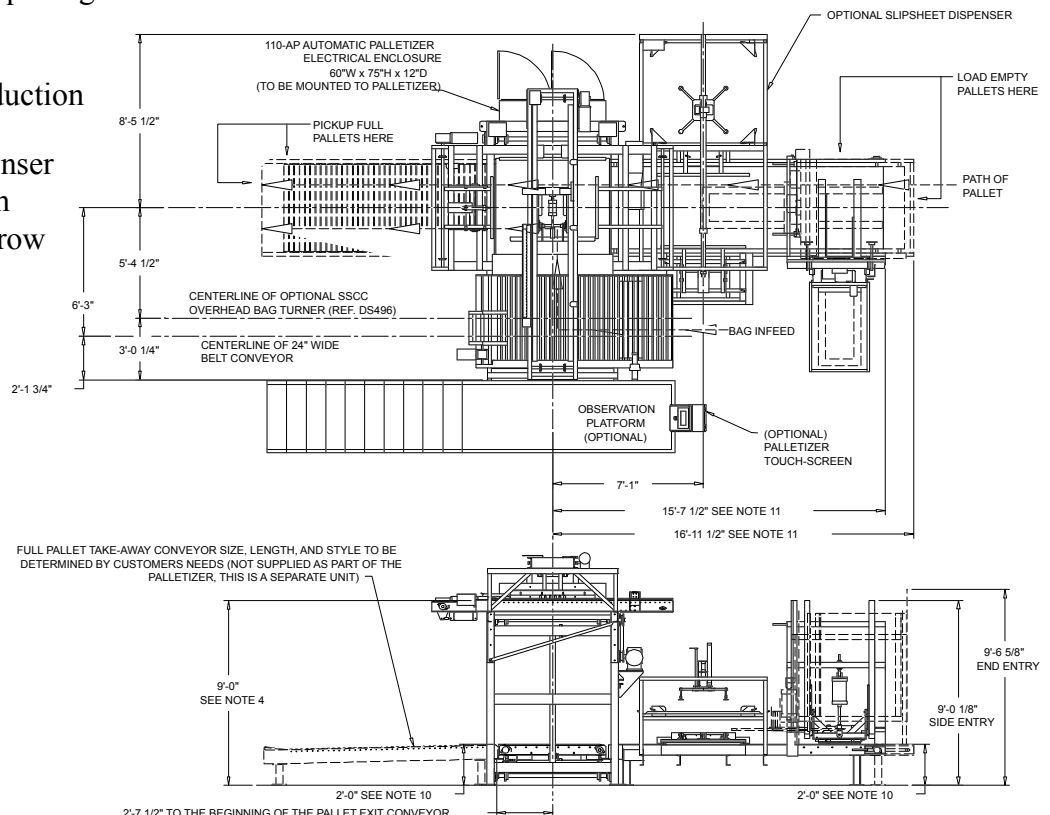
- 9'-0" standard for 68" max filled pallet
- Other heights available

Pallet magazine capacity:

- Up to 16 pallets (5" thick)

Options

- Full color touchscreen with diagnostics
- Slip sheet dispenser
- Automatic adjustment of layer squaring plates for pattern size changes
- Observation platform
- Dual row former for higher production rates
- Low pallet alarm on pallet dispenser
- Empty slip sheet dispenser alarm
- Live roller or acetyl link belt at row forming area
- Empty pallet squaring device
- Overhead bag turner



1881 West North Temple
Salt Lake City, UT
84116 U.S.A.

☎ 801 595-6800
☎ 801 363-7830
@ stonepak@premiertech.com
WWW.STONEPAK.COM